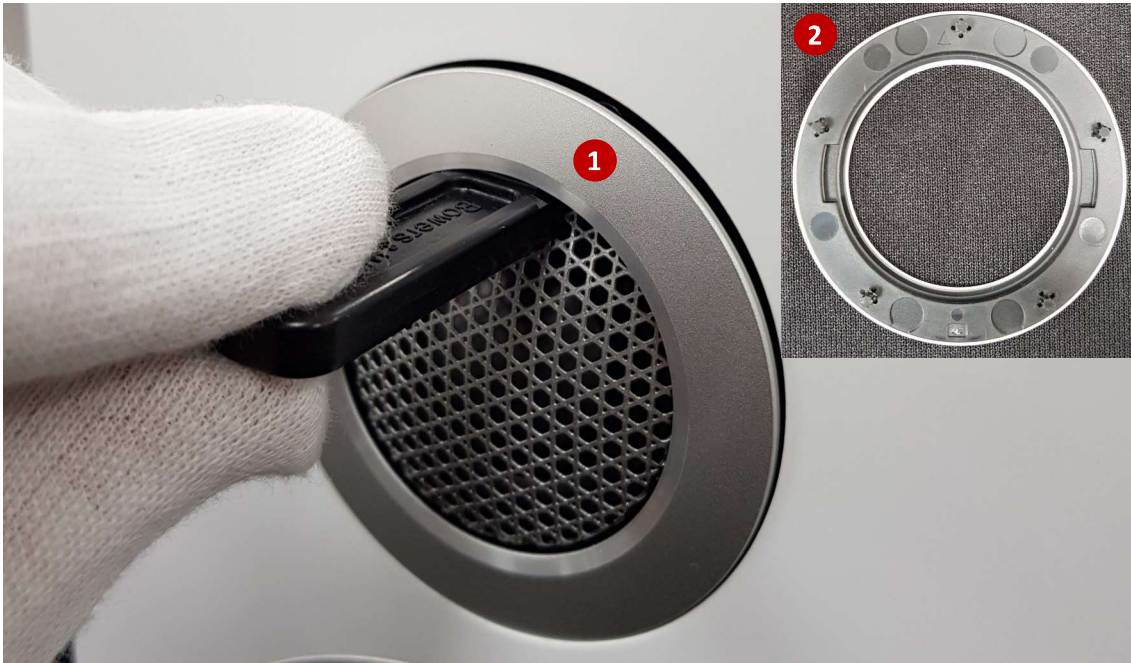


Bowers & Wilkins

4. Tweeter Removal

Start by using Tool 1.5 - MM09989 HF Trim Removal Tool. Insert the Lip of the Trim Removal Tool into the Tweeter Trim. Lever the Trim Removal Tool against the Grille until Tweeter Trim begins to lift from the cabinet **(1)**.

Note: Take care when putting pressure on the Grille so not to damage the Tweeter



The Outer-Rim can now be removed and placed to one side awaiting reassembly. Take note of correct orientation of the Tweeter Trim (Small arrow and single plastic peg at the top). **(2)**

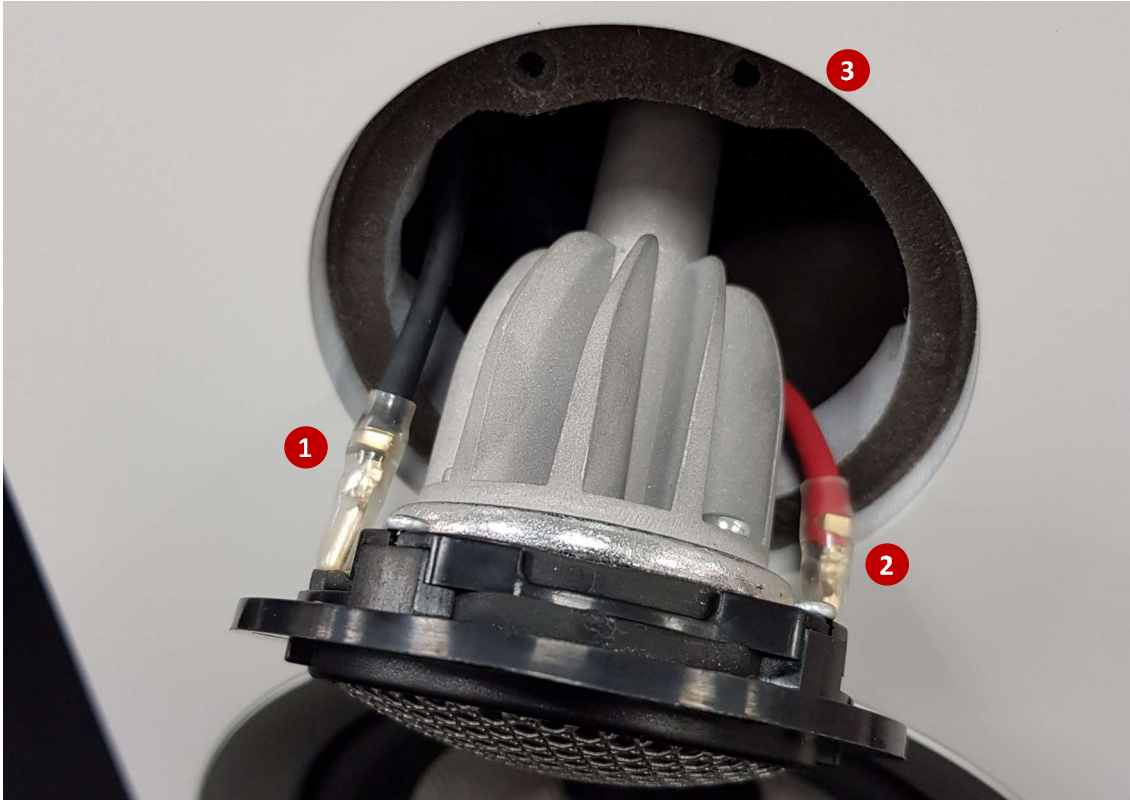
With the Tweeter Trim removed you are able to unscrew the 4 x Screws holding the Tweeter Assembly in place **(3-6)**.



The contents of this document and associated files contain confidential information that is propriety to B&W Group Ltd., and are intended solely for the purpose of servicing the product. The information is intended for use by service technicians familiar with electronic products. No part of the contents should be supplied or published elsewhere.

Bowers & Wilkins

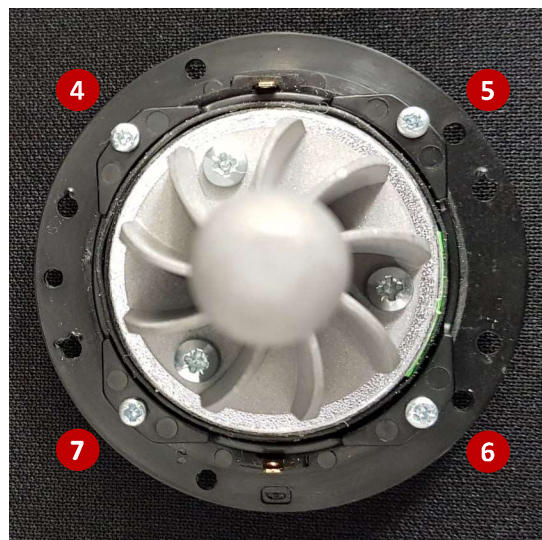
Carefully ease the Tweeter forward from the cabinet and remove the Black (-) **(1)** and Red (+) **(2)** Leads. Ensure that the Foam Gasket **(3)** remains in position for reassembly. (Take note of the red paint on the right (+) Tweeter connection, this is to show the Red (+) cable position)



Note: If the Tweeter is stuck in position and cannot be eased forward it may be necessary to remove the Mid/Base Speaker. This will allow access to the rear of the Tweeter Assembly so that you can gently push it forward until free.

With the Tweeter Assembly removed, access to the rear of the Tweeter can be gained. Start by removing the 4 x Screws **(4-7)** around the Plastic Retainer. The Plastic Retainer can then be removed and placed to one side.

Note: Take care removing the Plastic Retainer so as not to damage the Rubber Gasket.



The contents of this document and associated files contain confidential information that is propriety to B&W Group Ltd., and are intended solely for the purpose of servicing the product. The information is intended for use by service technicians familiar with electronic products. No part of the contents should be supplied or published elsewhere.

Bowers & Wilkins

With the Plastic Retainer **(1)** removed you are able to use the magnetic side of Tool 1.5 – MM09989 HF Trim Removal Tool to gently lift the Tweeter Grille **(2)** from the Tweeter Assembly **(3)**



IMPORTANT: Ensure you do not touch the Tweeter when removing the Grille as this will mark or damage the Tweeter. This cannot be rectified without replacement.

Reassembling the Tweeter

Please work backwards through the Tweeter Disassembly process ensuring all the below points:

- Gaskets are correctly positioned and not damaged
- All screws are tightened
- Cables and tweeter are orientated correctly (Red Paint – Red Cable,)
- Tweeter Trim is correctly positioned with arrow and single plastic peg at the top

The contents of this document and associated files contain confidential information that is propriety to B&W Group Ltd., and are intended solely for the purpose of servicing the product. The information is intended for use by service technicians familiar with electronic products. No part of the contents should be supplied or published elsewhere.