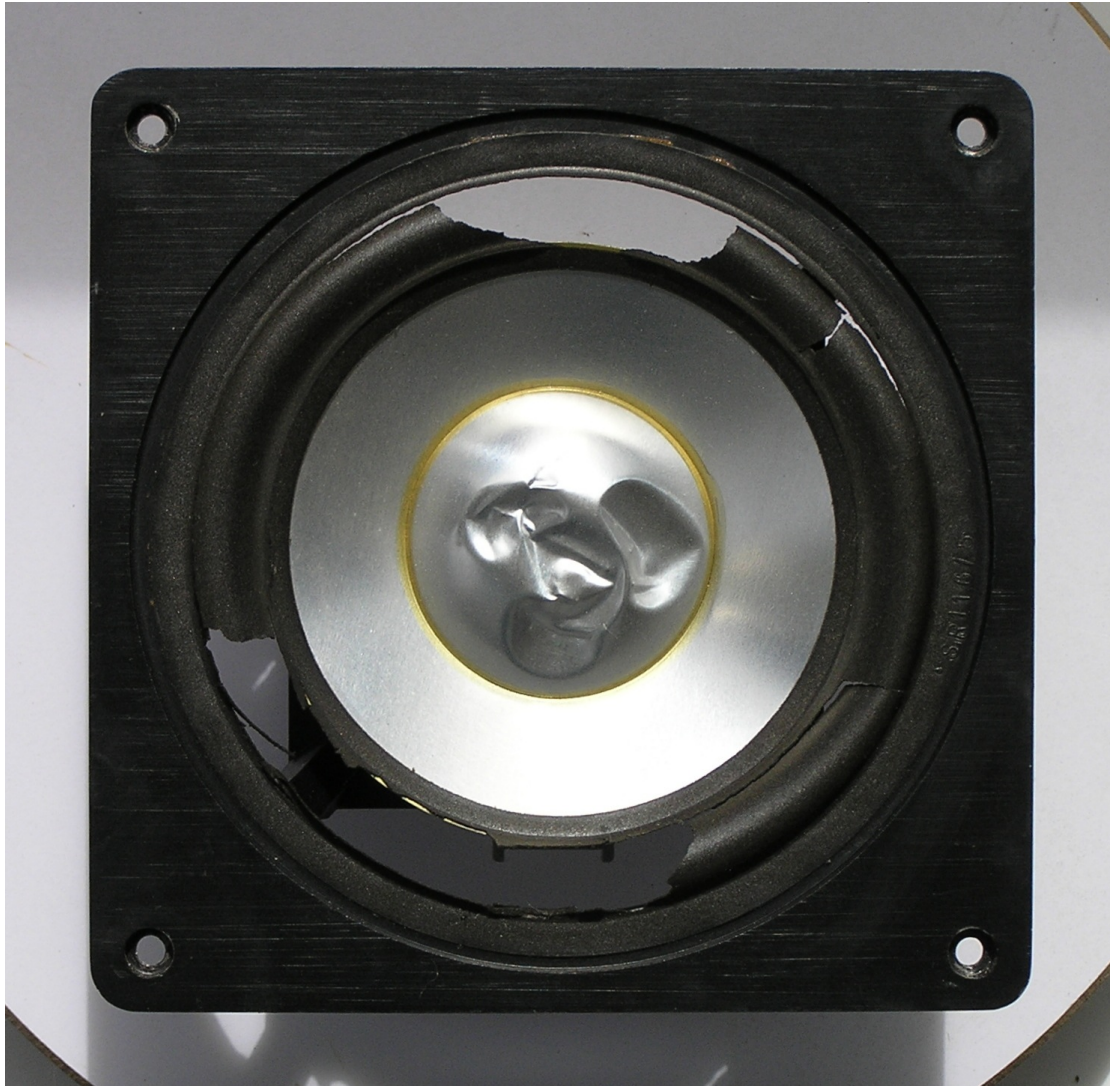
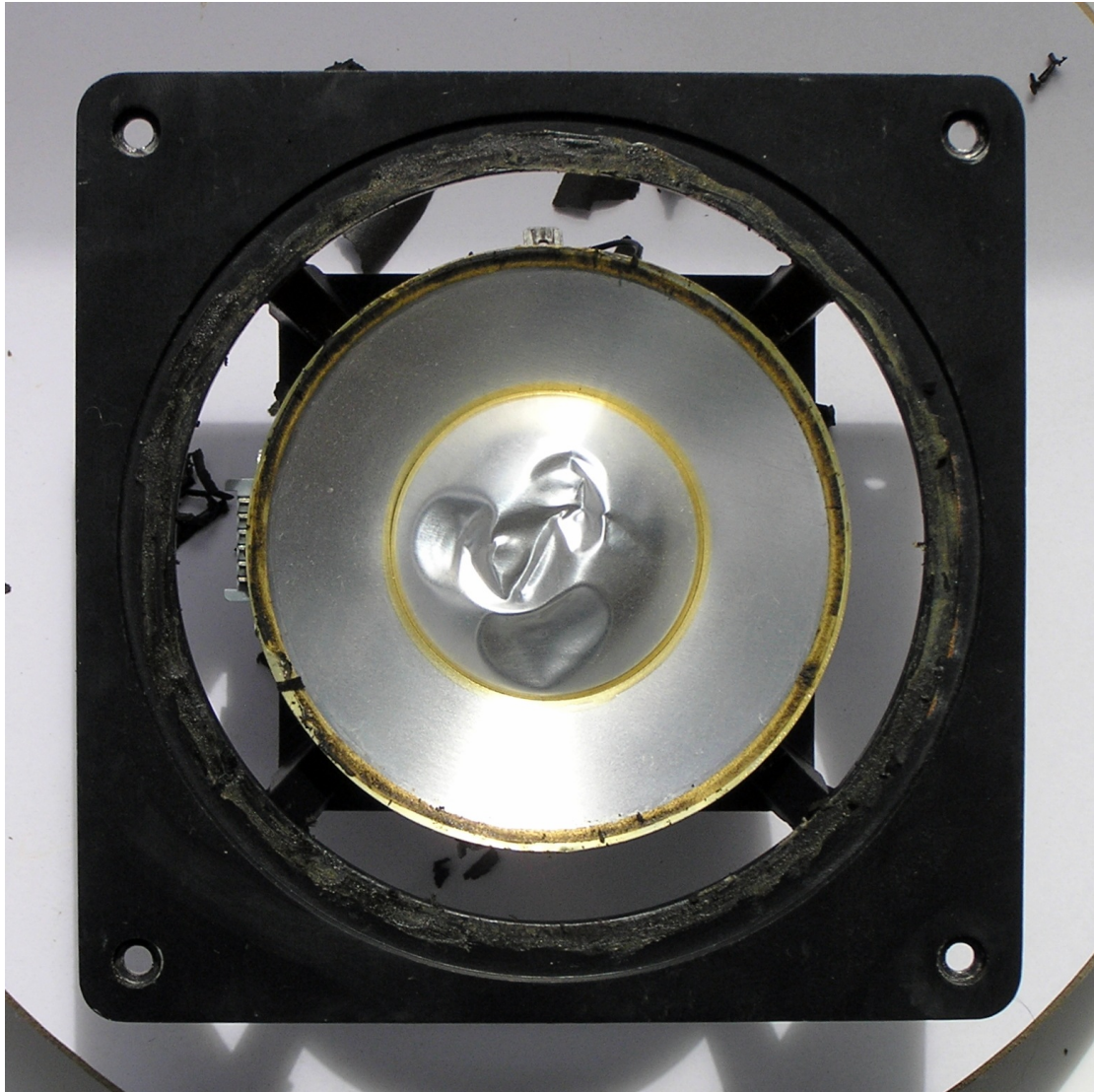


BM6 version 4

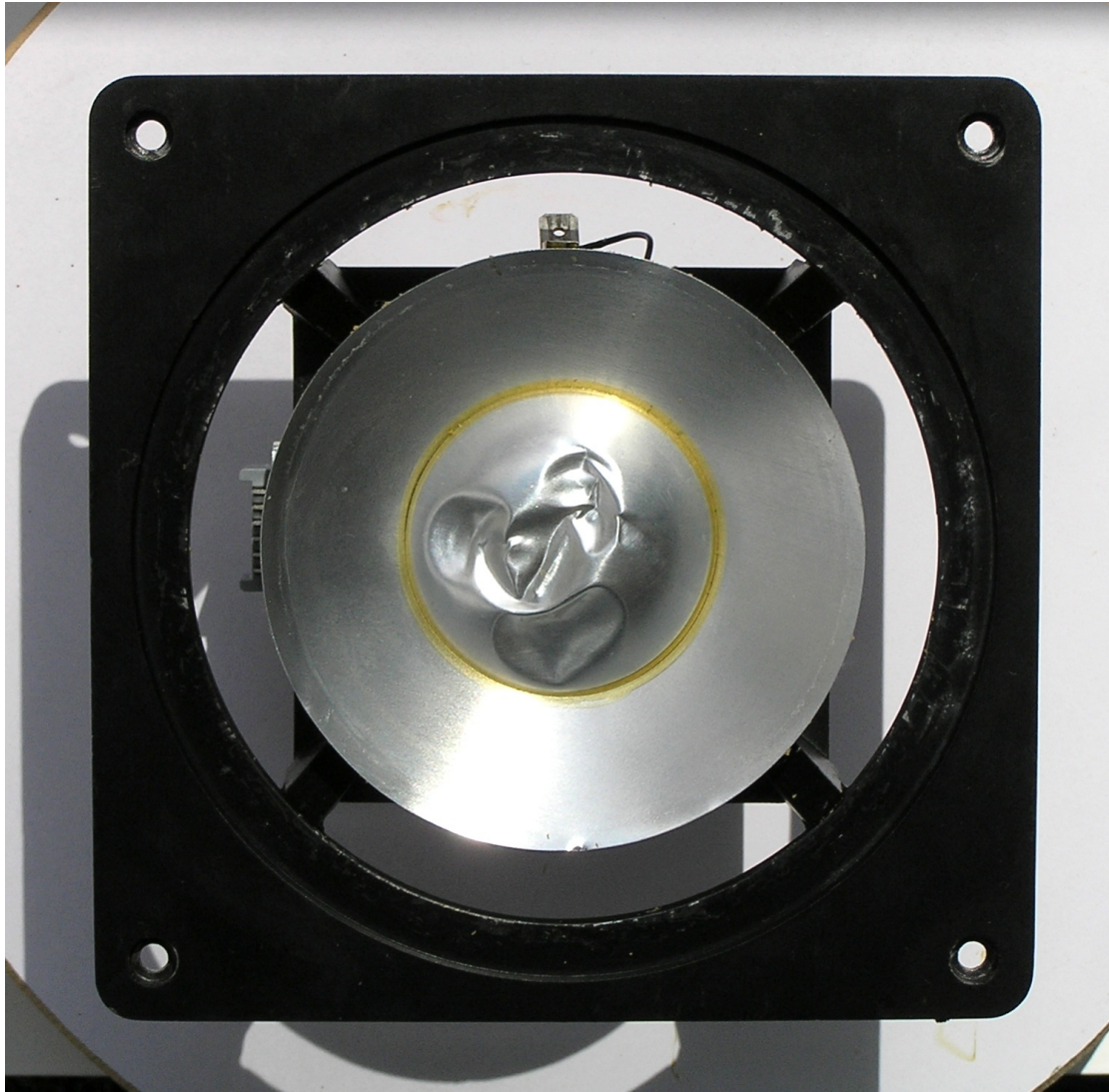
Refoaming of the Midwoofers



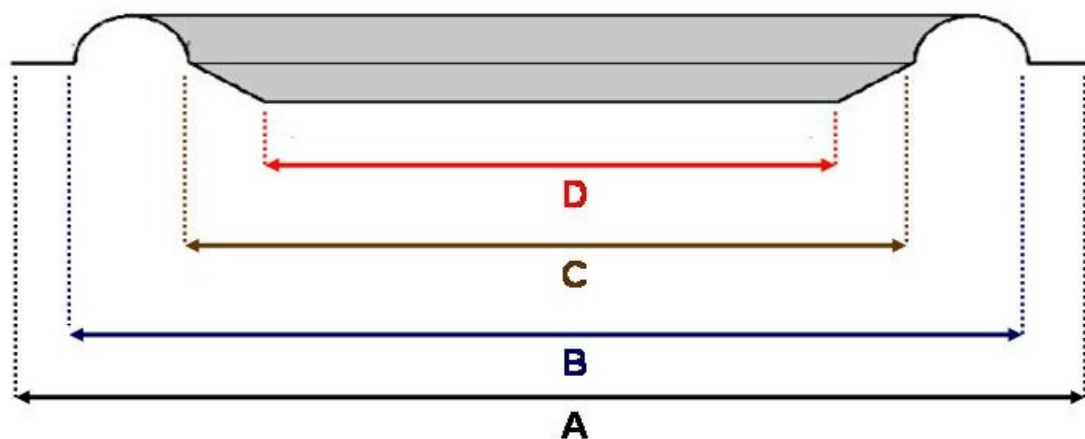
**A typical BM6 midwoofer after 30 years of service and punishment:
The surround is completely rotten, sticky and falls apart with the
slightest touch.
Besides that, someone 'sculptured' the dustcap.**



**Start with removing the old surround with a knife as much as possible.
Wipe the knife on a cloth regularly to remove the sticky remnants.**



Remove the old glue with benzene, a knife and a cloth from the dye-cast frame. The glue on the cone is some kind of adhesive that softens using thinner, and can be removed easily with your finger afterwards.

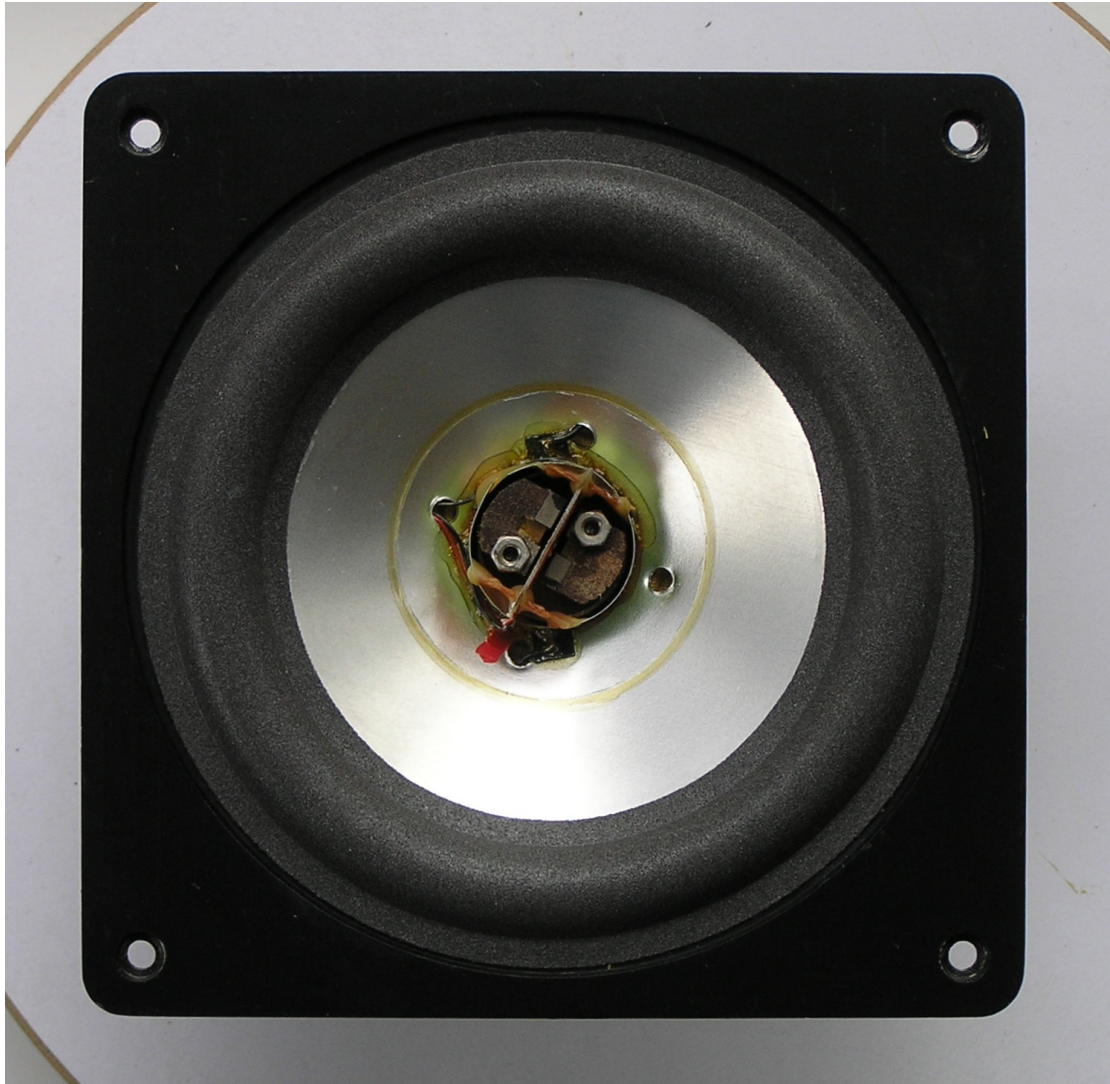


New rings have following measurements
(type F5C11, www.goodhifi.nl):

A = 128 mm
B = 114.5 mm
C = 890 mm
D = 820 mm



Glue the flat sides of the new foam surround, the outer edge of the cone and the ring of the frame. Glue is supplied with the rings (smells like wood glue). Just apply a thick film, though not too much. Let it dry for a couple of minutes and put the ring on the frame. Center it. Press lightly to stick it in place. Now gently press the inner ring on the cone, giving back pressure on the cone with a finger. Optically align it as a circle.



Apply a few drops of thinner onto the cone, so that the glue that holds the dustcap is moistened. Use a sharp knife and circle round and round on the bond until it comes off. Above you can clearly see the feedback system when the cap is removed.

Now use a small cup (I used some small metal IKEA thing) to reform the dustcap: use the cup as a mold, apply pressure with your fingers, and make the cap smooth again.



Glue the dustcap back in place, and you're finished!